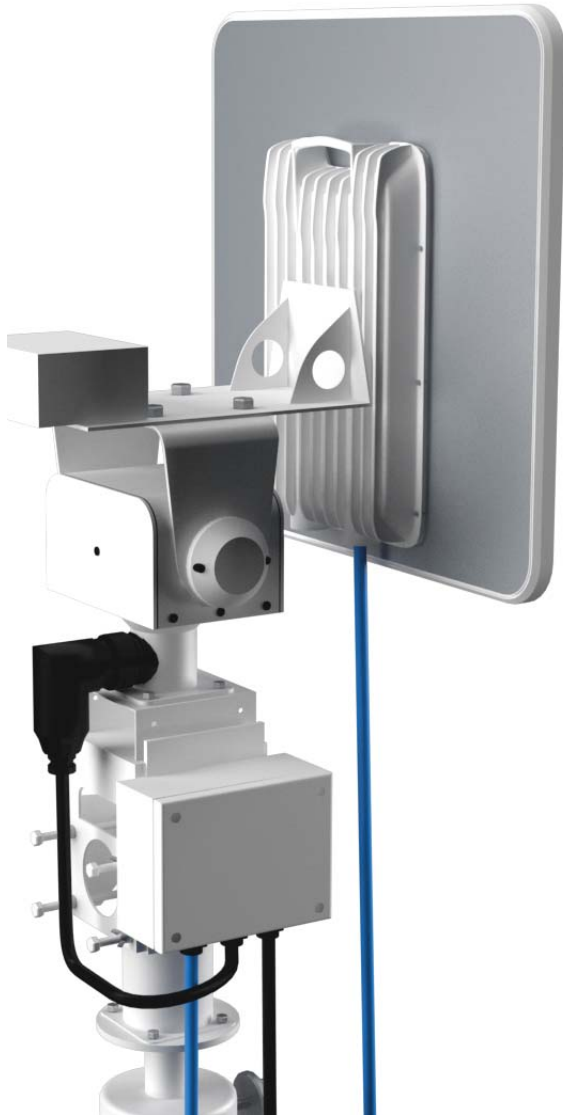


PRODUCT OVERVIEW

BTS - 25

QD



Specifications	
BTS 25QD - Quick Deploy Open Air Positioner - (20 lb. Payload)	
PHYSICAL DIMENSIONS	Positioner Only: 9.12" (H) x 9.37" (W) x 5.25" (D)
WEIGHT	20 lbs.
ENVIRONMENTAL	Standardized to IP-66
OPERATING TEMP*	Standard: -30°C - 55°C
PAN/TILT-AXIS RANGE*	±217° (±20 Standard Elevation)
PAN/TILT-AXIS SPEED	22°/sec max (PAN) 11°/sec max (TILT)
POSITIONER MATERIALS	Marine Grade Configuration, Aluminum Housing, 316 Stainless Steel Hardware, Permanently Sealed Radial Ball Bearings Finish: Polyester Powder Coat, Chemical Conversion Coating (Alodine) for Corrosion Resistance
CONTROL UNIT (INTEGRATED)	IP-66 Junction Box (RJ45 & Power Cable Access)
MOUNTING*	3" - 4" Pole Mount (Required)

System Operation

The BTS-25 Quick Deploy was designed to be as hands off as possible, eliminating the need for advanced technical resources. Upon arrival to the link area, the operator simply raises the mast or tripod and powers on the system. Through the use of our industry-leading link location, alignment, and optimization software, the BATS system will begin its scan and connect sequence - without any additional input from the user.

With its automated operation and on-board control unit, the all-integrated Quick Deploy solution eliminates the need for additional software or even the use of an external rackmount or hardened control unit.

System Features

- Low-Cost Quick Deploy Configuration
- One-touch link location and optimization
- Signal Lobe Optimization for accuracy to within 0.25 of beamwidth
- SNMP Monitoring & Dynamic Service Level Validation
- HTTPS, SSH, Telnet Management
- Dynamic system compensation for azimuth and elevation
- Signal Health Monitor to counteract signal weakness or link disruption
- Integrated control unit, no RMCU or HCU required
- Field Link connection in under 5 minutes

BATS
www.batswireless.com
8431 Georgetown STE. 600
Indianapolis, Indiana 46268

Toll Free +1-888-955-8228
Sales +1-317-500-4507
Support +1-317-500-4506
Email info@batswireless.com