

# PRODUCT OVERVIEW

# ONPOINT



## Advanced System Automation

Rapid antenna location and synchronization  
Dual axis actuators re-align for link acquisition

## System Agnostic

Fully customizable setup allows for near universal list of antenna/radio configurations

## Seamless Deployment

All-integrated, internal control unit solution. Provisioning available with laptop or smartphone.

## Rapid Fixed Link Provisioning

BATS uses an industry-first wireless search algorithm that scans the horizon for a compatible signal. Once targeting has occurred, the system scans the wireless lobes to locate the center point, providing quick network links at the highest throughput possible.

## Reduced Tower Costs

BATS innovative Automated Antenna Alignment system delivers efficient wireless backhaul links without need for an experienced RF engineer. Any operator with experience climbing towers can deliver an ultra-precise network link in under 20 minutes.

## Continuous Signal Optimization

After initial alignment to the center point, the OnPoint will continue to monitor the signal and align the antenna to the peak signal, mitigating factors such as fluctuations based on thermal expansion of the tower, wind events, or other environmental conditions, eliminating downtime and reoccurring cost due to manual re-alignment.



[www.batswireless.com](http://www.batswireless.com)

8431 Georgetown Rd #600  
Indianapolis, Indiana 46268

Toll Free +1-888-955-8228

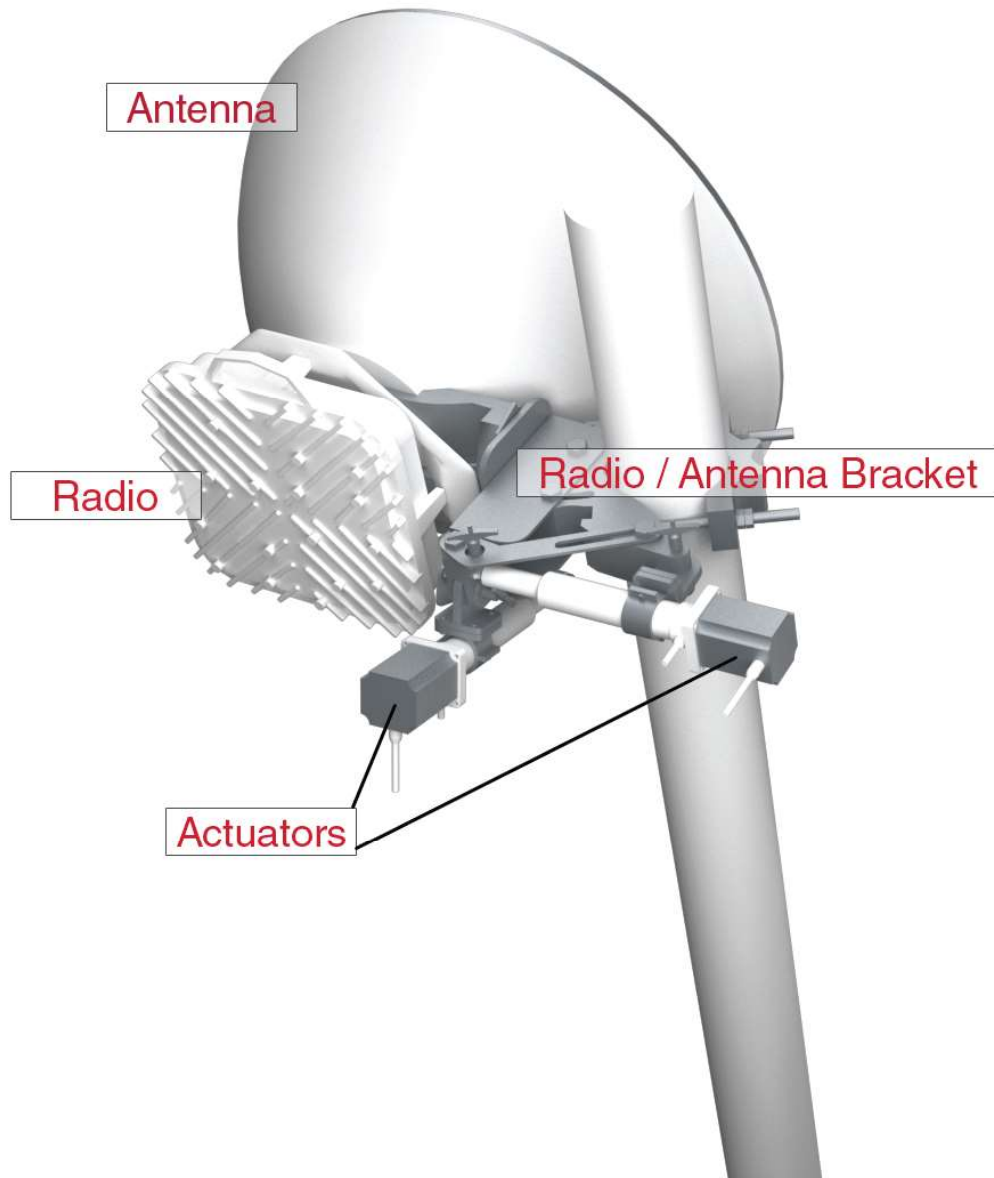
Sales +1-317-500-4507

Support +1-317-500-4506

Email [info@batswireless.com](mailto:info@batswireless.com)

# PRODUCT SPECIFICATIONS

# ONPOINT **L**



## Specifications

### OnPoint L - Light Payload Continuous Antenna Aiming System for Fixed Links

WEIGHT	Bracket: 21.2 lbs (27.9 lbs w/ actuators)
PAN/TILT AXIS RANGE	$\pm 15^\circ$ (PAN/TILT)
ACCURACY	0.02°
MOUNTING	1.5" to 4.5" Pole
MATERIALS	6061-T6 Aluminum Alloy
FINISH	Black Hard-Anodized Finish

### OnPoint Integrated Control Unit

PHYSICAL DIMENSIONS	W 78mm (7.0"), H 140mm (5.5"), D 76mm (3.0")
WEIGHT	~5 lbs. / 2.5 kg
ENVIRONMENTAL	Standardized to IP-66
POWER	48VDC (PoE or DC Cable)
CONFIGURATION	WIFI - Smart Phone, Tablet, Laptop