

PRODUCT OVERVIEW

BTS - 500



Advanced System Automation

One-touch antenna location and synchronization
Dual axis motors realign for link acquisition

System Agnostic

Enclosed and open-air options
Fully customizable setup allows for near universal list of antenna/radio configurations

Seamless Installation

Two cables provide both motor control, and data connectivity

Rapid WWAN Provisioning

BATS uses an industry-first wireless search algorithm that scans the horizon for a compatible signal. Once targeting has occurred, the system scans the wireless lobes to locate the center point, providing quick network links at the highest throughput possible.

Dynamic System Tracking & Stabilization

With GPS Lobe Optimization, the system routinely checks connection health to detect and immediately counteract any drops or weaknesses in the wireless signal caused by interference, environmental changes, or sudden platform movement. As platform movement occurs, as seen during a mobile deployment, the system will recalibrate and adjust its position in real-time to compensate for directional changes of the base platform in both axis, azimuth and elevation.

Enhanced Control Unit

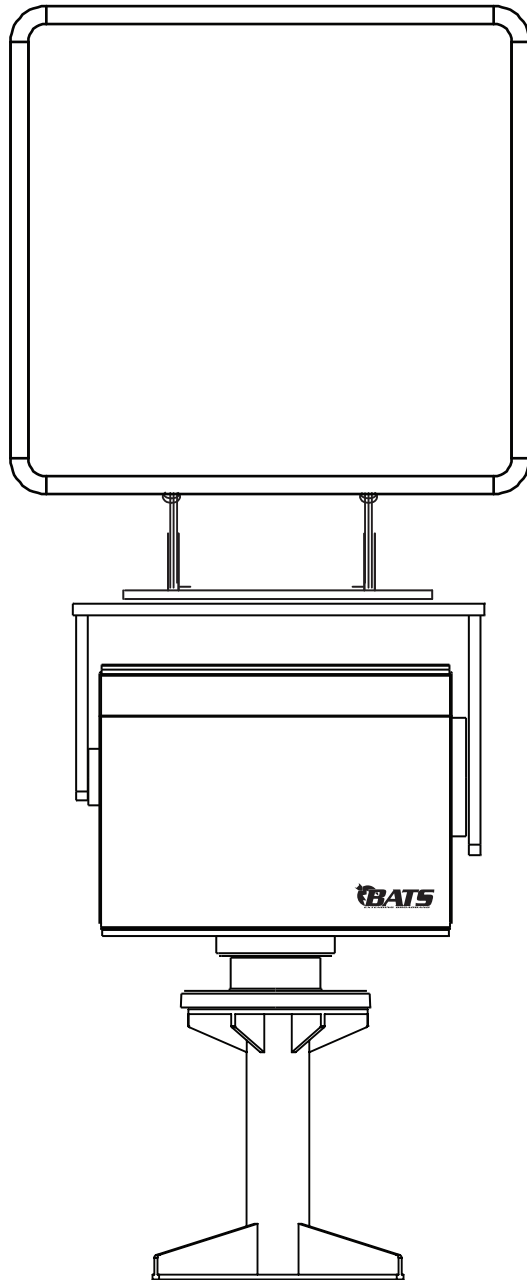
Ruggedized and rack mount configurations
SNMP Monitoring & Dynamic Service Level Validation
WWAN link management with available Link Manager
HTTPS/SSH/Telnet Management



Toll Free +1-888-955-8228
Sales +1-317-500-4507
Support +1-317-500-4506
Email info@batswireless.com

PRODUCT SPECIFICATIONS

BTS - 500



Specifications

PU 500 - Open-Air Positioning Unit - (500 lb. Payload)

PHYSICAL DIMENSIONS	17.47" (H) x 17.8" (W) x 12.28" (D)
WEIGHT	122 lb.
ENVIRONMENTAL	Standardized to IP-67
OPERATING TEMP*	-30°C to 55°C
PAN/TILT-AXIS RANGE*	±217.5° or 360° (slip ring) / 180° (±90°)
PAN/TILT-AXIS SPEED	0.001° - 20°/sec (PAN) 0.001° - 4°/sec (TILT)
LOAD TORQUE	500 lb-ft (680 Nm)
STATIC LOAD MAX	1260 lb. (571 kg)
STATIC TORQUE MAX	1500 lb-ft (2040 Nm)

RMCU 500 - Rack Mount Control Unit - for PU 500

PHYSICAL DIMENSIONS	3.5" (H) x 19" (W) x 13" (D)
WEIGHT	16 lb.
OPERATING TEMP*	0°C - 65°C (-40°C Option)
OPERATING VOLTAGE	AC: 90 - 265 VAC; 47 - 63 Hz DC: 10 - 36 VDC w/Auto
NETWORK PORTS	(10/100/1000 Mbps)

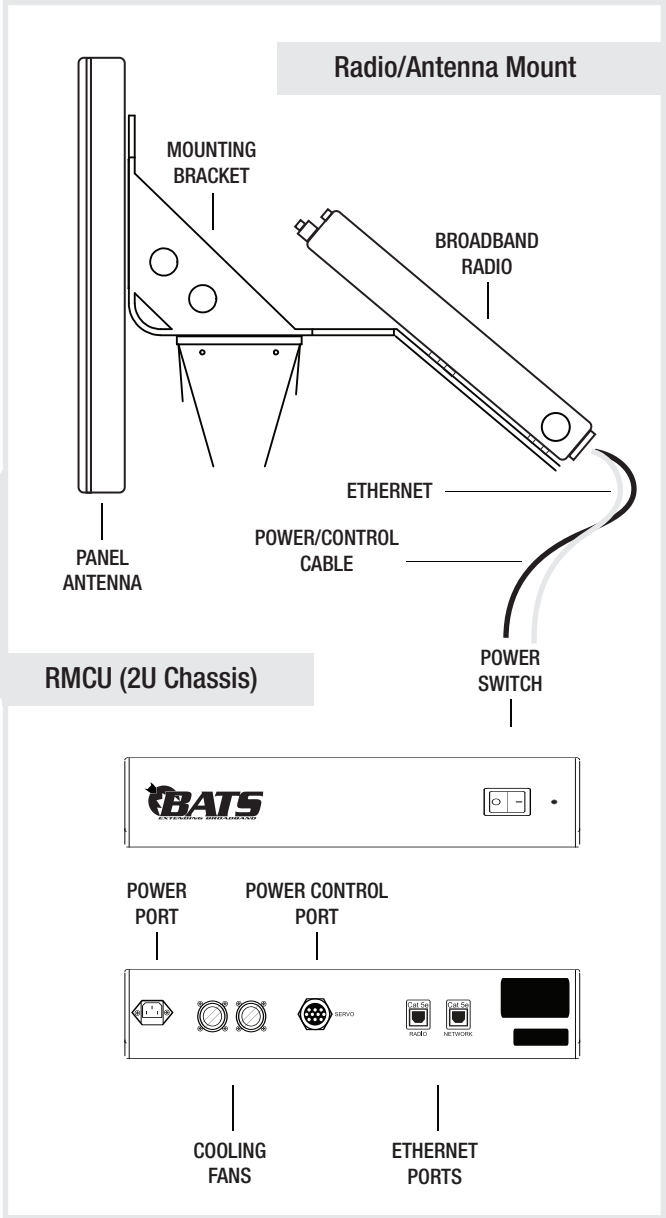
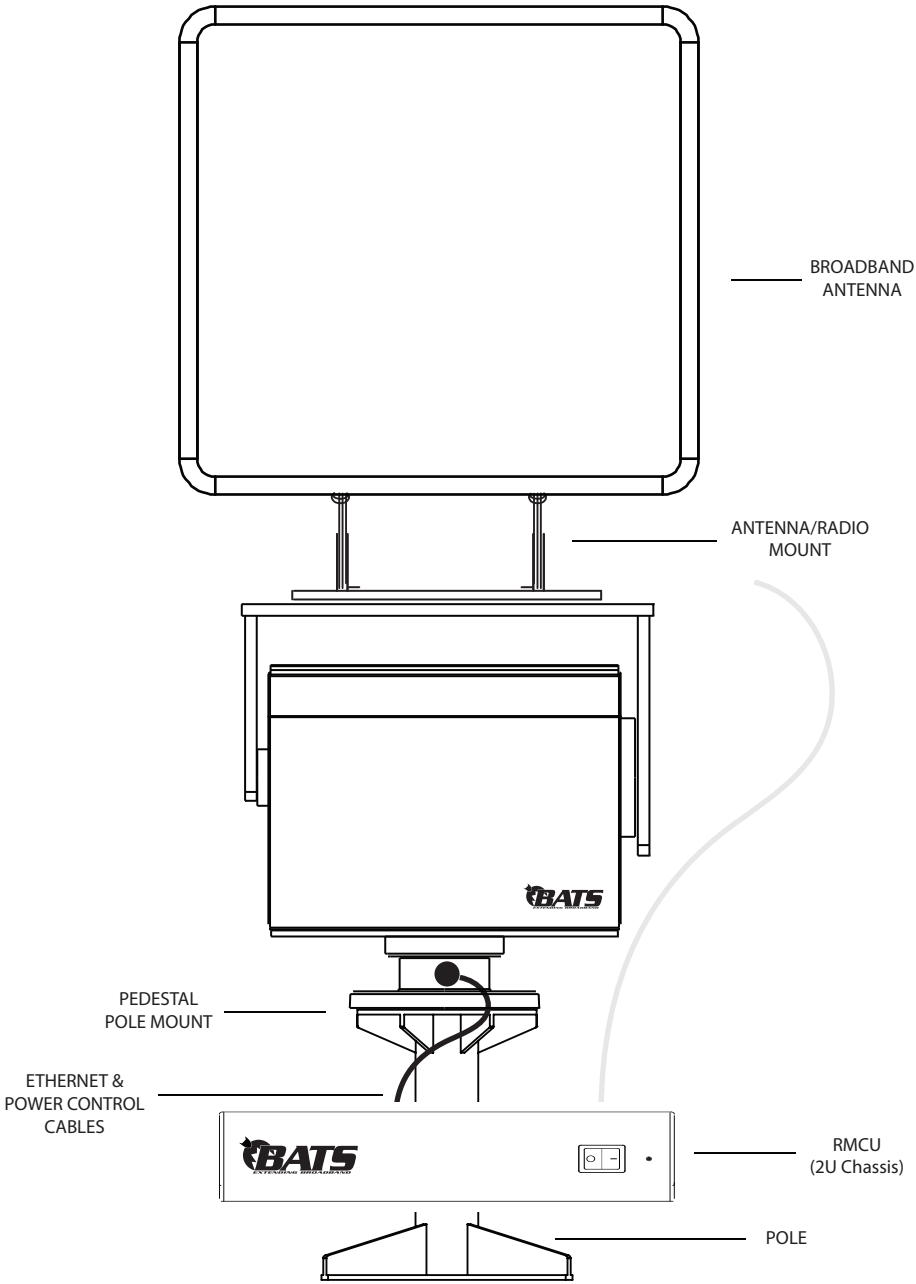
Components & Accessories

GPS TARGETING STABILIZER	GPS-Based Signal Targeting & Stabilization
FLEET CONTROLLER	Control Appliance for Multiple Control Units
POSITIONING UNIT CABLING	PU Power Cables, Available up to 330 ft.
MIL-SPEC CABLING	Insulated Cat 5e Cabling, Available up to 330 ft.
MOUNTING HARDWARE	Universal Pole Mount Kits, Radio Mount Kits

**Additional Components Required*

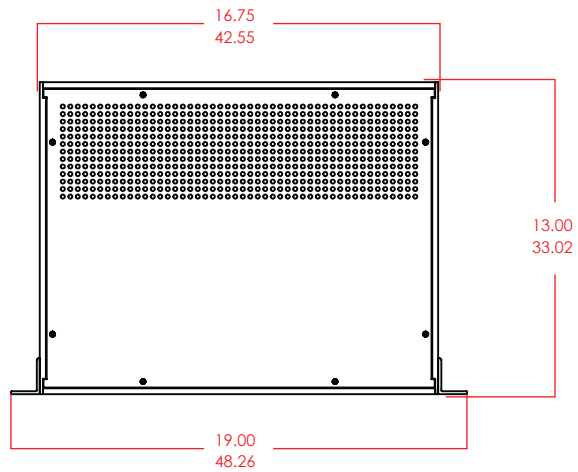
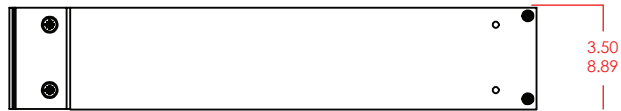
SYSTEM LAYOUT

BTS - 500



PRODUCT OVERVIEW

Rackmount Control Unit (2U)



CONTROL UNITS

Hardened Control Unit

