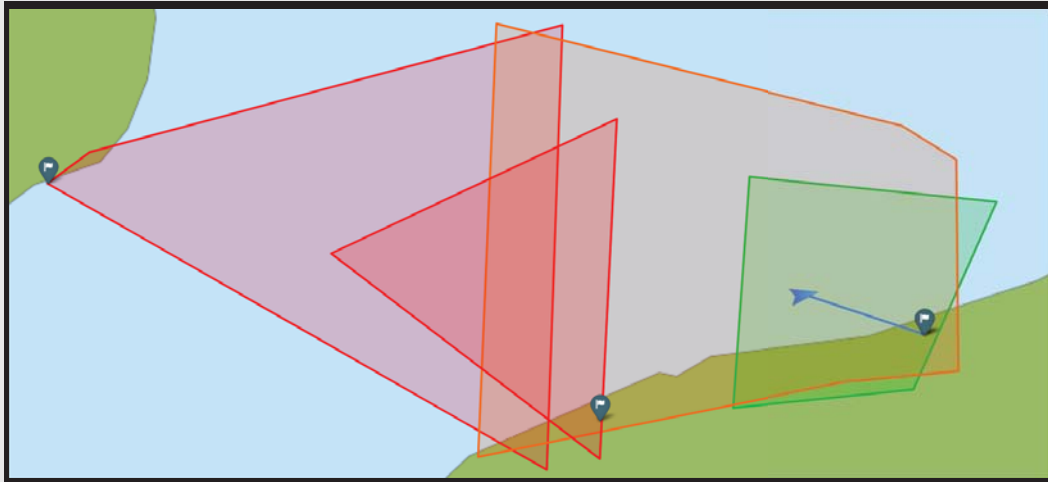


SOLUTIONS

LINK MANAGER

Location-Aware Access Point Routing



- ✔ Enables seamless handoff between point-to-point links
- ✔ Utilizes GPS and Heading data for enhanced targeting
- ✔ Allows for custom operational zones for link targeting
- ✔ Combines with link bonding for intelligent link failover

BATS Wireless' innovative Link Manager solution utilizes referenced GPS and Heading data, combined with custom operational zone targeting to intelligently control the point-to-point connection process.

The Link Manager, through its innovative use of network link bonding and asset communication delivers a network that can stay seamlessly connected and adapt to changes in the wireless network environment; by sharing information on signal quality, antenna coverage areas, and distance to a targeted access points.

As vehicles or vessels enter an operational area, the Link Manager acts as a physical wireless link router, directing the tracking systems to the appropriate access point based on predetermined set of operational requirements.

Should a link prove unavailable, the Link Manager, can intelligently re-route the wireless link to another available access point - all without network interruption to the end user.



www.batswireless.com

8431 Georgetown, Ste. 600
Indianapolis, Indiana 46268

Toll Free +1-888-955-8228
Sales +1-317-500-4507
Support +1-317-500-4506
Email info@batswireless.com