

PRODUCT OVERVIEW

ONPOINT HDX



Advanced System Automation

Rapid antenna location and synchronization
Dual axis actuators re-align for link acquisition

System Agnostic

Fully customizable setup allows for near universal list of antenna/radio configurations

Seamless Deployment

All-integrated, internal control unit solution. Provisioning available with laptop or smartphone.

Rapid Fixed Link Provisioning

BATS uses an industry-first wireless search algorithm that scans the horizon for a compatible signal. Once targeting has occurred, the system scans the wireless lobes to locate the center point, providing quick network links at the highest throughput possible.

Reduced Communication Link Costs

BATS innovative Automated Antenna Alignment system delivers efficient wireless backhaul links using commercial radios without need for an experienced RF engineer. This means high capacity, resilient network links without the need for fiber or satellite.

Continuous Signal Optimization

After initial alignment to the center point, the OnPoint will continue to monitor the signal and align the antenna to the peak signal, mitigating factors such as fluctuations based on thermal expansion of the tower, wind events, or other environmental conditions, eliminating downtime and reoccurring cost due to manual re-alignment.



www.batswireless.com

8431 Georgetown Rd #600
Indianapolis, Indiana 46268

Toll Free +1-888-955-8228

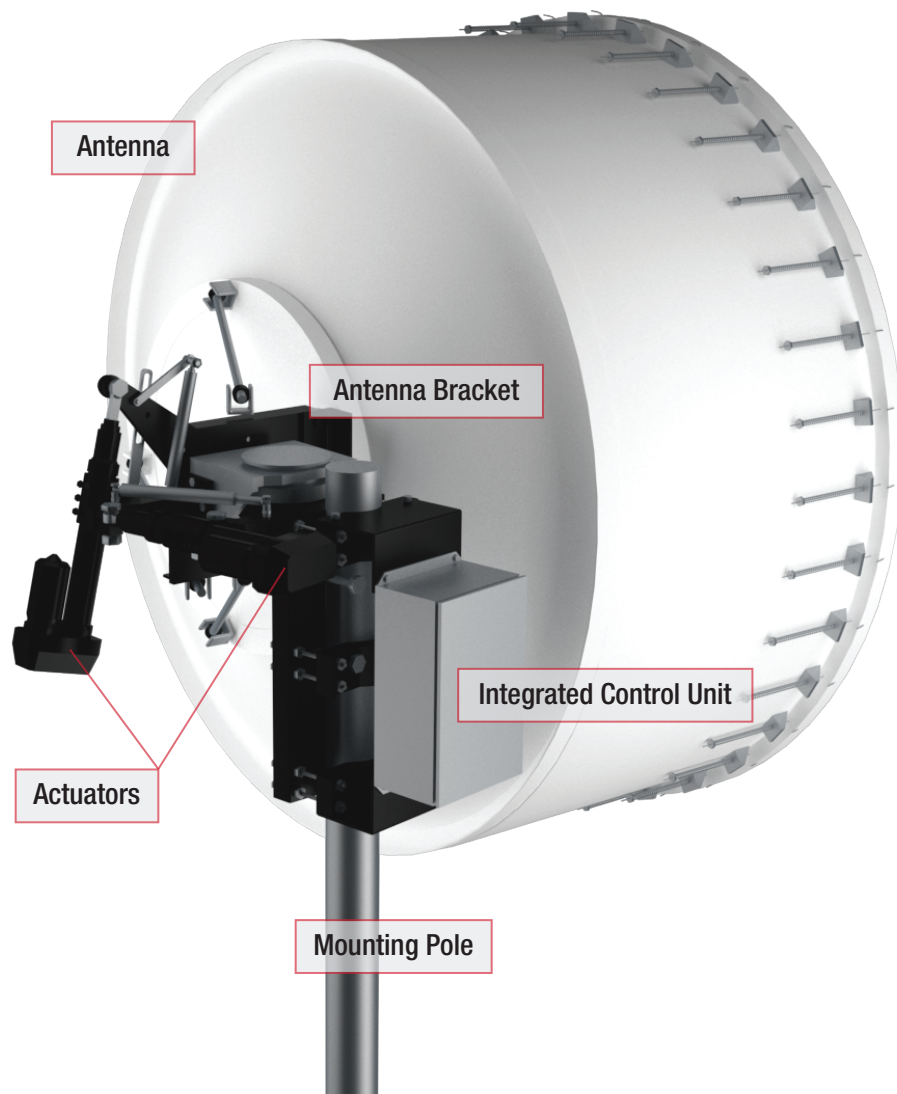
Sales +1-317-500-4507

Support +1-317-500-4506

Email info@batswireless.com

PRODUCT SPECIFICATIONS

ONPOINT HDX



Specifications

OnPoint HDX - Heavy Duty Continuous Antenna Aiming System for Fixed Links

WEIGHT	Bracket: 70 lbs (130 lbs w/ actuators)
PAN/TILT AXIS RANGE	±15° (PAN/TILT)
STABILIZATION SPEED	Up to 1.5°/sec
POINTING ACCURACY	0.5°
ENVIRONMENTAL	Standardized to IP-66
OPERATING TEMP*	Standard: -40°C - 65°C Optional: -50°C - 65°C
OPERATING POWER	Peak: 300 Watts* Standby: 35 Watts
OPERATING VOLTAGE	DC: 20 - 50 VDC (48V Nominal)
MOUNTING	4" to 4.5" Pole
MATERIALS	6061-T6 Aluminum Alloy
FINISH	Black Hard-Anodized Finish

OnPoint HDX Integrated Control Unit

PHYSICAL DIMENSIONS	W 78mm (7.0"), H 140mm (5.5"), D 76mm (3.0")
WEIGHT	~25 lbs.
ENVIRONMENTAL	Standardized to IP-66
POWER	48VDC
CONFIGURATION	Smart Phone, Tablet, Laptop

*Peak power draw is payload dependent. Contact us for more information.